

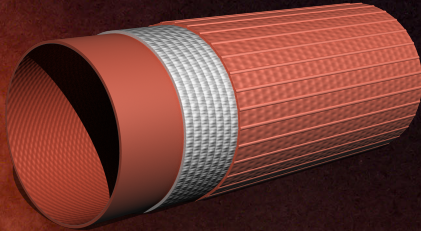
CONSTRUCTION

Interior and exterior layer:

Specially-formulated nitrile rubber, extruded through the circular fabric. Minimal flow loss thanks to its smooth interior wall. High thermal resistance.

Reinforced middle textile:

Circular weaved outer layer made from high tenacity polyester thread. No defects (broken threads, knots, etc.)



PERFORMANCE

- Excellent resistance to abrasion and intensive use by professionals.
- Highly resistant to oil, gasoline and a wide range of chemicals.
- Very resistant to both contact and radiant heat.
- Light and flexible hose even at low temperatures (-15°C) Easy to handle and roll up.
- Highly resistant to breakage thanks to the specially-made textile.
- No maintenance or drying necessary.
- Available for compliance with various international certifications.

USES

- Fire-fighting and industrial use.
- Refineries.
- Marine use on ships and platforms.
- Military use.
- Airports.
- Forestry.

TECHNICAL CHARACTERISTICS

DIAMETER		WEIGHT	THICKNESS	WORKING PRESSURE	BREAKAGE PRESSURE
inches	mm.	gr/m.	mm.	Bars	Bars
1"	25	250	1,95	40	>120
1¼"	32	310	2,00	27	>80
1½"	38	345	1,95	21	>62
1⅔"	42	395	2,10	20	>60
1¾"	45	410	1,90	21	>62
2"	52	460	2,00	20	>60
2¼"	55	470	2,00	17	>52
2½"	64	600	2,10	17	>52
2¾"	70	680	2,30	17	>50
3"	75	790	2,50	17	>50
3¼"	80	810	2,25	15	>45
3½"	90	930	2,35	15	>45
4"	102	1030	2,50	17	>52
4⅓"	110	1160	2,40	15	>45
4½"	115	1180	2,40	10	>30
5"	125	1400	2,70	15	>45
6"	152	1650	2,60	14	>42